

FILED

2-2-94

PLAT SURVEY

BY *Sheila Cole*

SECTION 19
SECTION 20

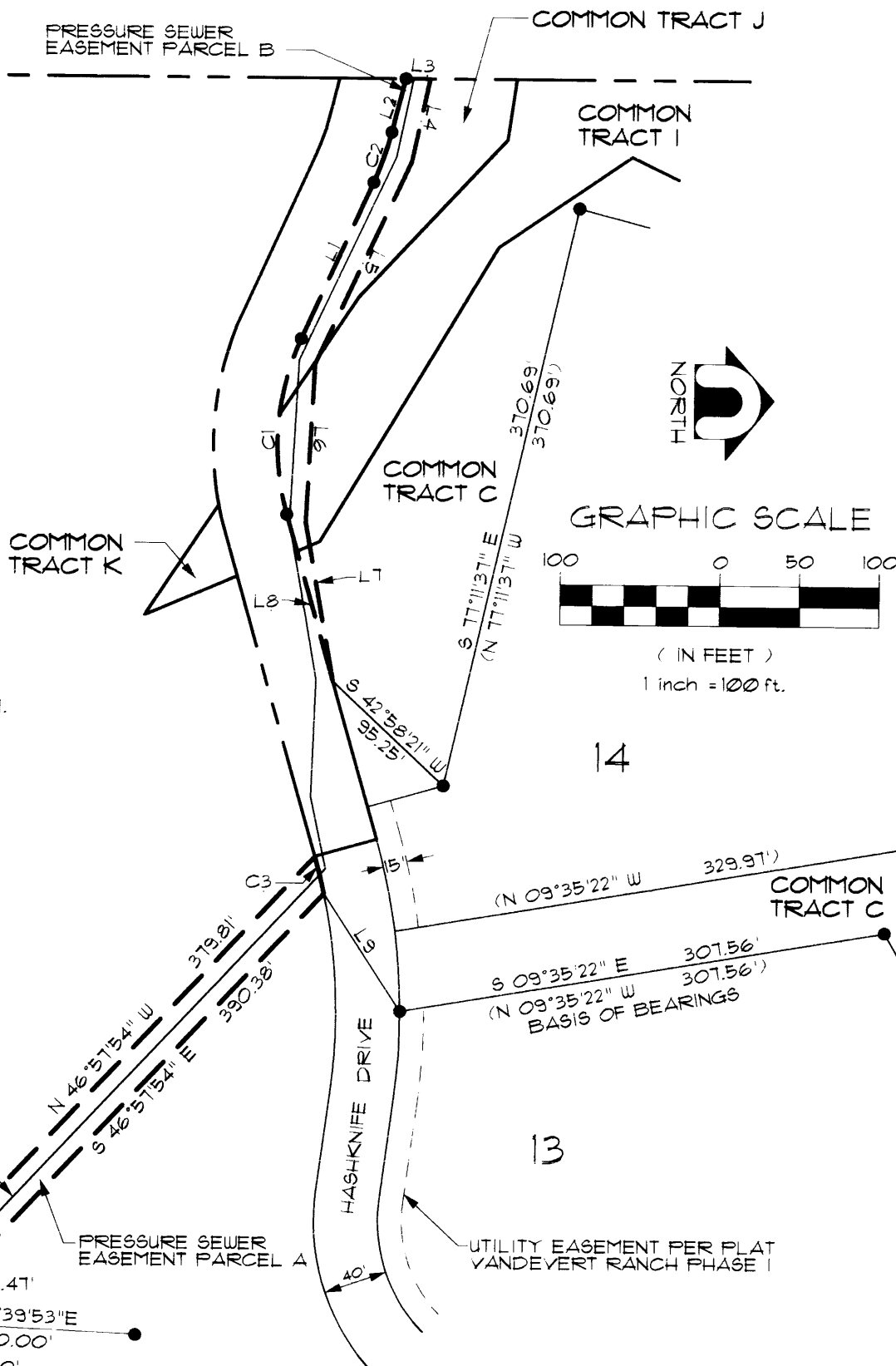
LINE DATA TABLE

LINE	DIRECTION	DISTANCE
L1	N 65°38'23" W	107.74'
	(N 65°38'23" W	107.74')
L2	N 75°41'52" W	34.46'
	(N 75°41'52" W	34.46')
L3	N 00°00'43" E	15.31'
L4	S 77°52'27" E	53.28'
L5	S 64°55'20" E	139.84'
L6	S 87°04'29" E	98.87'
L7	N 79°47'54" E	101.01'
L8	S 74°01'44" W	108.08'
L9	S 56°46'37" W	87.68'

NARRATIVE

THE PURPOSE OF THIS SURVEY WAS TO ESTABLISH THE LOCATION OF SEWER EASEMENT AREAS WITHIN THE COMMON AREAS OF VANDEVERT RANCH PHASE I. BEARINGS ARE BASED ON SAID PLAT.

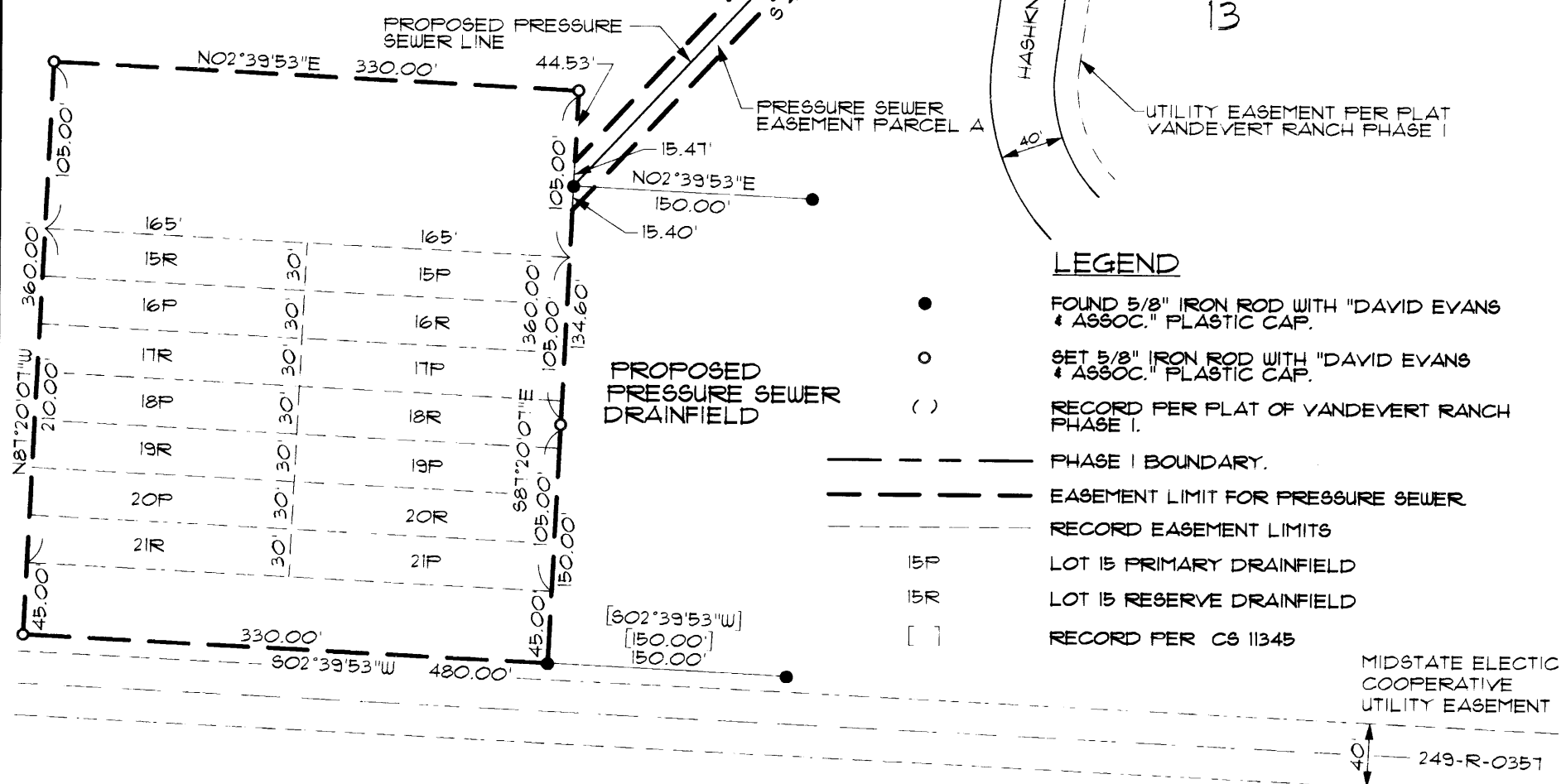
REGISTERED PROFESSIONAL LAND SURVEYOR
David K. Bateman
OREGON
JULY 30, 1976
DAVID K. BATEMAN
1068
RENEWS 12-31-95



GRAPHIC SCALE



(IN FEET)
1 inch = 100 ft.



LEGEND

- FOUND 5/8" IRON ROD WITH "DAVID EVANS & ASSOC." PLASTIC CAP.
- SET 5/8" IRON ROD WITH "DAVID EVANS & ASSOC." PLASTIC CAP.
- () RECORD PER PLAT OF VANDEVERT RANCH PHASE I.
- PHASE I BOUNDARY.
- - - - - EASEMENT LIMIT FOR PRESSURE SEWER.
- - - - - RECORD EASEMENT LIMITS
- 15P LOT 15 PRIMARY DRAINFIELD
- 15R LOT 15 RESERVE DRAINFIELD
- [] RECORD PER C6 11345

CURVE DATA TABLE

CURVE	RADIUS	LENGTH	CHORD	BEARING	DELTA
C1	160.00'	112.63'	110.32'	N 85°48'20" W	40°19'53"
	(160.00'	112.63'	110.32'	N 85°48'20" W	40°19'53"
C2	190.00'	33.35'	33.31'	N 70°40'07" W	10°03'29"
	(190.00'	33.35'	33.31'	N 70°40'07" W	10°03'29"
C3	360.00'	23.83'	23.83'	N 75°58'01" E	03°47'35"

CS11741

scale 1" = 100' design DKB
date 1-25-94 drawn JPT / REVISED JHL
file GRDX001 - GRDIEASE.DWG (120)

DEA
DAVID EVANS AND ASSOCIATES, INC
709 NW WALL STREET, SUITE 102
BEND, OREGON 97701 (503)389-7614

REVISED EXHIBIT A
VANDEVERT RANCH
PRESSURE SEWERLINE EASEMENTS
LOCATED IN THE WEST 1/2 NORTHWEST 1/4 SECTION 20,
TOWNSHIP 20 SOUTH RANGE 11 EAST, WILLAMETTE MERIDIAN,
DESCHUTES COUNTY, OREGON